

# DAIRY PRODUCT

## BASIC LABEL REQUIREMENTS



### INTRODUCTION

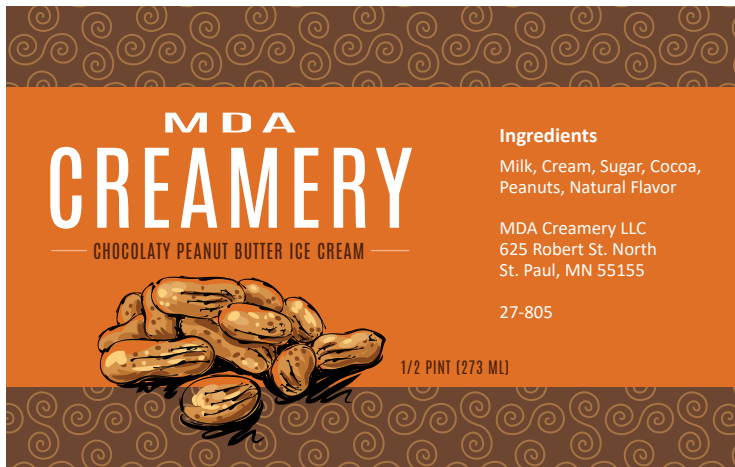
All packaged dairy products must have a label to identify the product, the manufacturer, quantity, and a variety of other information about the product. Labeling requirements are established by federal and state laws and regulations. This document describes the basic items required on labels for dairy products.

### GENERAL LABELING REQUIREMENTS

#### How should dairy products be labeled?

There are two ways to label dairy products:

A single label on the front of the package. This is known as the Principal Display Panel (PDP) which is the portion of the label most likely to be seen by the consumer at the time of purchase.



#### CHEESE CURDS

**INGREDIENTS:** PASTEURIZED MILK, SALT, CULTURES, RENNET

KEEP REFRIGERATED

<b>Packaged on</b> JUL 25, 18		<b>Sell by</b> AUG 08, 18
<b>Net Wt/Ct</b> 0.48 lb	<b>Unit Price</b> \$6.50/lb	<b>Total Price</b> <b>\$3.12</b>

MDA Creamery LLC  
625 Robert St. North, St. Paul, MN 55155  
27-805

Another way is to divide the information into two labels, PDP and Information Panel (IP). The IP must be immediately to the right of the PDP on the package.



**Note:** Packages may be designed with two or more different surfaces that are suitable for display as the PDP. These are called alternate PDP's.



## What information is required on the label?

Information		Label Location (PDP or IP)
1	Product Identity	PDP & Alternate PDP
2	Net Wt. Statement	PDP & Alternate PDP
3	Ingredient List (Including Allergens)	PDP or IP

Information		Label Location (PDP or IP)
4	Business Name & Address	PDP or IP
5	Nutrition Facts Panel	PDP or IP
6	Plant Number	Anywhere on the package



## REQUIRED LABELING INFORMATION

### 1. Product Identity – This is the common name of the dairy product

Product Identity is based on:

- Name established by law or regulation  
*Ex: Ice Cream is defined by this federal regulation: 21 CFR 135.110*
- The common or usual name of the dairy product  
*Ex: Goat Cheese*
- Descriptive name of the dairy product, or when the nature of the food is obvious, a fanciful name commonly used by the public  
*Ex: Yogurt Drink With Raspberries*

### 2. Net Quantity of Contents (Net Weight Statement) The amount of food in the package

Located in the bottom one-third of the PDP, the Net Weight Statement is listed in:

- Ounces (oz) and metric equivalent (g) for solid dairy products such as Butter or Cheese; or
- Fluid ounces (fl oz) and metric equivalent (mL) for liquid dairy products such as Milk.

There are several exceptions from this requirement. The most common exceptions are:

- Fluid dairy products and Ice Cream do not need to provide the wording “Net Content”.
- Fluid Milk and Ice Cream products can be listed as ½ Pint, Pint, Quart, ½ Gallon, and Gallon instead of fluid ounces but must include metric measurements.
- Labels for random weight packages of Cheese must have the Net Wt., Price Per Pound, and Total Price.
- For additional information regarding exceptions, see 21 CFR 1.24, 21 CFR 101.7, and 21 CFR 101.100.

### 3. Ingredient List – Required for dairy products containing more than one ingredient

List ingredients in descending order by predominance of weight. The ingredients weighing the most are listed first, and the ingredients weighing the least are listed last.

List multi-component ingredients (an ingredient made up of other ingredients) parenthetically unless the weight is known on each sub ingredient.



**INGREDIENTS:**  
MILK, SUGAR, CHOCOLATE POWDER  
(COCOA, CORN STARCH, DEXTROSE, SALT,  
CARRAGEENAN), NATURAL FLAVOR

#### Exception

Ingredients (including multi-component ingredients) do not need to be listed in descending order by predominance of weight if:

- Ingredients are present in amounts of 2 percent\* or less; and
- Ingredients are listed after an quantifying statement  
(Ex: “Contains \_percent or less of \_\_\_\_\_” or “Less than \_percent of \_”).

\*This percent or 1.5 percent, 1.0 percent, or .5 percent.

● *Recipe*

● Milk – 94 %

---

● Sugar – 3 %

---

● Chocolate Powder – 2%

---

● Natural Flavor – 1%

---

● \_\_\_\_\_

---

● \_\_\_\_\_

#### INGREDIENTS:

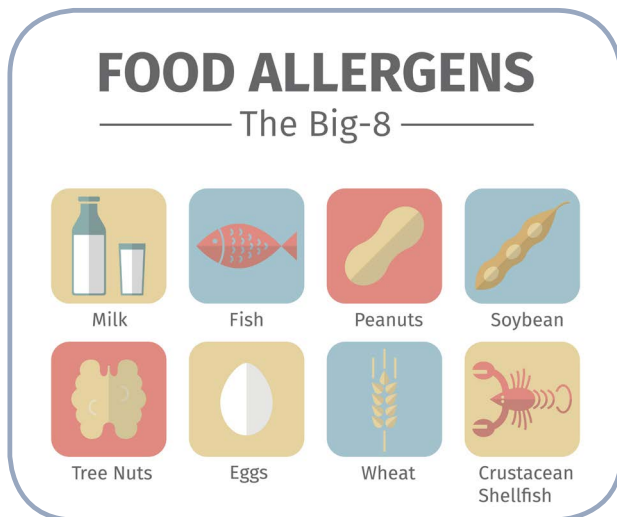
MILK, SUGAR, CONTAINS 2 PERCENT  
OR LESS OF COCOA, NATURAL FLAVOR,  
CORN STARCH, DEXTROSE,  
CARRAGEENAN, SALT

## Allergens

Allergen labeling is required if one of the eight major allergens is not listed by its common or usual name in the ingredient list. There are two ways to provide allergen information:

1. List the common or usual name of the food source, followed by the name of the allergen in parentheses within the ingredient list. **Example: Cream (Milk), Lecithin (Soy);** or
2. After the ingredient list, place the word “Contains:” followed by the common name of the food allergen. **Example: Contains: Milk, Soy.**

**Note:** For tree nuts, list the specific type. **Example: Contains: Pecans**



## 4. Business Name and Address – Name and Address of the Manufacturer, Packer or Distributor

- For Corporations, use the Corporation’s name
- For Individuals, Partnerships, or Associations, list the business name that the entity operates under.

If the business on the label doesn’t make the dairy product, the business name shall be accompanied by a qualifying phrase (“manufactured for” or “distributed by”).

Include the business’ street address, city, state, zip code. The street address may be omitted if the business is found in a city directory or telephone directory.

## 5. Nutrition Facts Panel – Nutritional Information on Particular Nutrients

FDA requirements for the Nutrition Facts Panel are complex and beyond the scope of this document. Please refer to the U.S. Food and Drug Administration’s Food Labeling Guide for information.

## 6. Dairy Plant Number – Identification number of the dairy plant that made the product

The Dairy Plant Number is assigned by the associated regulatory authority. If the product is produced in a state where Dairy Plant Numbers are not assigned, the name and address of the business is an acceptable alternative.

## Additional Labeling Information

Depending on the product, additional labeling requirements might apply.

### For Further Information Contact:

Minnesota Department of Agriculture  
Dairy & Meat Inspection Division  
625 Robert Street North  
Saint Paul, Minnesota 55155-2538  
Phone: 651-201-6300 | Fax: 651-201-6116

## Resources

Food Labeling Guide (FDA)

[www.fda.gov/Food/GuidanceRegulation/GuidanceDocumentsRegulatoryInformation/LabelingNutrition/ucm2006828.htm](http://www.fda.gov/Food/GuidanceRegulation/GuidanceDocumentsRegulatoryInformation/LabelingNutrition/ucm2006828.htm)

Minnesota Statute 32D.20

[Minnesota Revisor State Statutes](#)



In accordance with the Americans with Disabilities Act, this information is available in alternative forms of communication upon request by calling 651-201-6000. TTY users can call the Minnesota Relay Service at 711. The MDA is an equal opportunity employer and provider. File Name: Dairy Product Basic Label Requirements.indd Revised:10.24.18