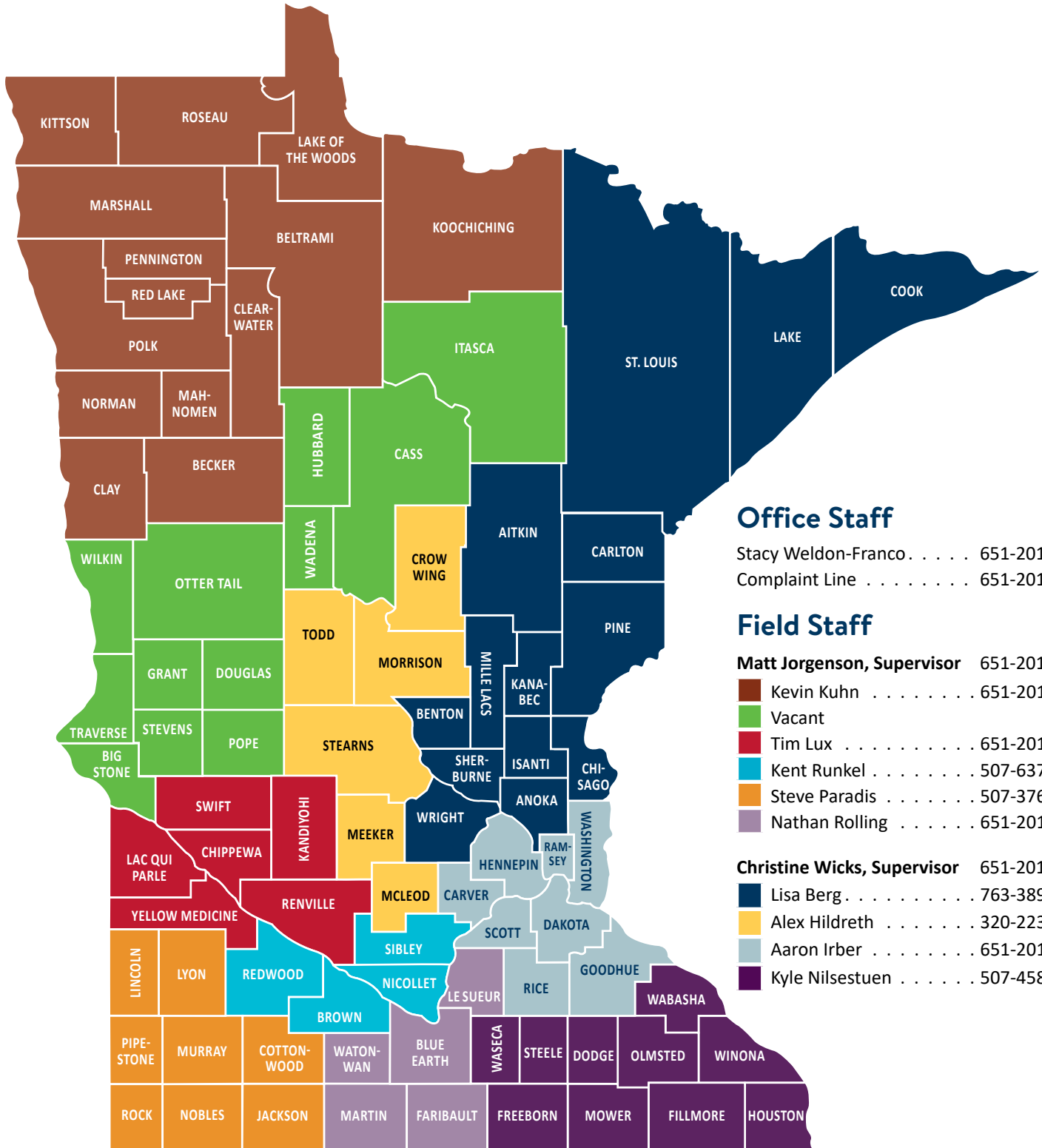


# INSPECTION UNIT OFFICE AND FIELD STAFF



## Office Staff

Stacy Weldon-Franco . . . . . 651-201-6696  
Complaint Line . . . . . 651-201-6333

## Field Staff

**Matt Jorgenson, Supervisor** 651-201-6506  
 Kevin Kuhn . . . . . 651-201-6256  
 Vacant  
 Tim Lux . . . . . 651-201-6116  
 Kent Runkel . . . . . 507-637-3764  
 Steve Paradis . . . . . 507-376-4816  
 Nathan Rolling . . . . . 651-201-6275

**Christine Wicks, Supervisor** 651-201-6390  
 Lisa Berg . . . . . 763-389-9840  
 Alex Hildreth . . . . . 320-223-6606  
 Aaron Irber . . . . . 651-201-6247  
 Kyle Nilsestuen . . . . . 507-458-4801

# Inspector and Assigned Counties

| County     | Inspector       |
|------------|-----------------|
| Aitkin     | Lisa Berg       |
| Anoka      | Lisa Berg       |
| Becker     | Kevin Kuhn      |
| Beltrami   | Kevin Kuhn      |
| Benton     | Lisa Berg       |
| Big Stone  | Vacant          |
| Blue Earth | Nathan Rolling  |
| Brown      | Kent Runkel     |
| Carlton    | Lisa Berg       |
| Carver     | Aaron Irber     |
| Cass       | Vacant          |
| Chippewa   | Tim Lux         |
| Chisago    | Lisa Berg       |
| Clay       | Kevin Kuhn      |
| Clearwater | Kevin Kuhn      |
| Cook       | Lisa Berg       |
| Cottonwood | Steve Paradis   |
| Crow Wing  | Alex Hildreth   |
| Dakota     | Aaron Irber     |
| Dodge      | Kyle Nilsestuen |
| Douglas    | Vacant          |
| Faribault  | Nathan Rolling  |
| Fillmore   | Kyle Nilsestuen |
| Freeborn   | Kyle Nilsestuen |
| Goodhue    | Aaron Irber     |
| Grant      | Vacant          |
| Hennepin   | Aaron Irber     |
| Houston    | Kyle Nilsestuen |
| Hubbard    | Vacant          |
| Isanti     | Lisa Berg       |

| County            | Inspector       |
|-------------------|-----------------|
| Itasca            | Vacant          |
| Jackson           | Steve Paradis   |
| Kanabec           | Lisa Berg       |
| Kandiyohi         | Tim Lux         |
| Kittson           | Kevin Kuhn      |
| Koochiching       | Kevin Kuhn      |
| Lac qui Parle     | Tim Lux         |
| Lake              | Lisa Berg       |
| Lake of the Woods | Kevin Kuhn      |
| Le Sueur          | Nathan Rolling  |
| Lincoln           | Steve Paradis   |
| Lyon              | Steve Paradis   |
| Mahnomen          | Kevin Kuhn      |
| Marshall          | Kevin Kuhn      |
| Martin            | Nathan Rolling  |
| McLeod            | Alex Hildreth   |
| Meeker            | Alex Hildreth   |
| Mille Lacs        | Lisa Berg       |
| Morrison          | Alex Hildreth   |
| Mower             | Kyle Nilsestuen |
| Murray            | Steve Paradis   |
| Nicollet          | Kent Runkel     |
| Nobles            | Steve Paradis   |
| Norman            | Kevin Kuhn      |
| Olmsted           | Kyle Nilsestuen |
| Otter Tail        | Vacant          |
| Pennington        | Kevin Kuhn      |
| Pine              | Lisa Berg       |
| Pipestone         | Steve Paradis   |
| Polk              | Kevin Kuhn      |

| County          | Inspector       |
|-----------------|-----------------|
| Pope            | Vacant          |
| Ramsey          | Aaron Irber     |
| Red Lake        | Kevin Kuhn      |
| Redwood         | Kent Runkel     |
| Renville        | Tim Lux         |
| Rice            | Aaron Irber     |
| Rock            | Steve Paradis   |
| Roseau          | Kevin Kuhn      |
| Saint Louis     | Lisa Berg       |
| Scott           | Aaron Irber     |
| Sherburne       | Lisa Berg       |
| Sibley          | Kent Runkel     |
| Stearns         | Alex Hildreth   |
| Steele          | Kyle Nilsestuen |
| Stevens         | Vacant          |
| Swift           | Tim Lux         |
| Todd            | Alex Hildreth   |
| Traverse        | Vacant          |
| Wabasha         | Kyle Nilsestuen |
| Wadena          | Vacant          |
| Waseca          | Kyle Nilsestuen |
| Washington      | Aaron Irber     |
| Watsonwan       | Nathan Rolling  |
| Wilkin          | Vacant          |
| Winona          | Kyle Nilsestuen |
| Wright          | Lisa Berg       |
| Yellow Medicine | Tim Lux         |